

First-ever  
**KONA Electric**

2019



# The H-Factor.™

What is the H-Factor™? It means you can have it all.

Our company believes in pushing the boundaries and challenging conventional thinking. Our very name, “Hyundai”, stands for modernity in the Korean language and it is this one word that helps represent everything we stand for. We don’t approach vehicle development in a traditional way. Our company is structured differently. We think differently. We find the modern way. It’s our mission to offer top quality, feature-rich vehicles at an affordable price.

We offer elite quality through meticulous design and painstaking craftsmanship. Our three design centres in Korea, the U.S. and Europe compete against each other to bring you cutting-edge designs — designs that not only look stunning but are also aerodynamic and fuel efficient.

We are the only global automaker to manufacture our own Advanced High-Strength Steel because, simply put, we just weren’t satisfied with what was available.

We test our vehicles in areas like the Arctic, our proving grounds in the Mojave Desert and on Germany’s world-famous Nürburgring circuit to deliver the durability and reliability you demand. And not only do we package our vehicles with advanced safety and technology, we back all our vehicles with one of the best automotive warranties in the industry. This means you really can have it all, quality and value together.

That’s the H-Factor.™



Kona Electric SUPERSTRUCTURE™,  
made with our Advanced High-Strength Steel.



# Power, fun and efficiency.

## Introducing the KONA Electric.

Enjoy electric driving at its best with fantastic acceleration and plenty of range. The versatile and very fun-to-drive Kona Electric is the first electric sub-compact SUV in Canada. This ground-breaking newcomer combines bold SUV style and features with a very impressive electric driving range. You can travel up to 415 kilometres<sup>^</sup> on a single charge, completely emission-free. With this extensive range, you could charge the battery as little as once a week, depending on your lifestyle and driving habits. Charge at home, at work or on the road at a public charging station.

Plus the Kona Electric also features an array of Hyundai SmartSense™ safety technologies to help keep you safe on the road — including the standard features below:



Forward Collision-Avoidance Assist with Pedestrian Detection



Blind-Spot Collision Warning with Lane Change Assist



Rear Cross-Traffic Collision Warning



Lane Departure Warning with Lane Keeping Assist



Parking Distance Warning — Reverse



Driver Attention Warning

# Go electric. In style.

Why follow the crowd when you can blaze your own trail with the first-ever Kona Electric?

Without the need for extensive powertrain cooling, the unique closed-off front grille gives a clean and stylish appearance. Functional air curtains around the front bumper help to reduce turbulence around the front wheels, which enhances aerodynamics. Bold body cladding runs along the side profile for a sporty look — and you can opt for available two-tone colour options to customize the Kona Electric to your style preferences.



Available LED headlights with active cornering lights



Standard LED tail lights



Standard 17" alloy wheels



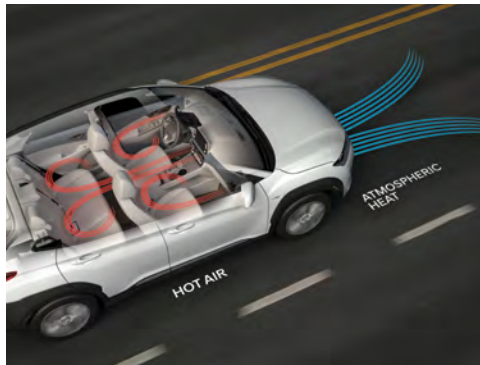
KONA  
Electric

# Ready to take on the urban jungle — emission-free.

The Kona Electric is seriously fun to drive and offers outstanding range flexibility. Travel up to 415 kilometres<sup>^</sup> with a full charge.

With instant torque delivered through the all-electric powertrain, the Kona Electric is lightning quick off the line. This sporty SUV accelerates from 0 to 100 km/h in only 7.6 seconds. Further enhancing your driving experience is a sophisticated multi-link rear suspension designed for agility, ride comfort and stability for enhanced handling. Drivers can also enjoy hands-on input to adjust the level of regenerative braking by using the mounted paddles on the steering wheel. The left paddle increases the recuperation of energy by increasing deceleration, while the right paddle decreases regeneration levels for a more natural coast down when braking.

Features that make electric driving a breeze:



### Heat pump system

The advanced heat pump system helps reduce loss of electric driving range in cold winter weather. The system absorbs external heat energy and converts it to cabin heating, therefore requiring less energy usage by the HVAC system.



### Convenient charging

A port located in the front grille makes charging quick and easy whether you are at home, work or on the go. The battery can be recharged up to 80% of its capacity in less than an hour with a Level 3 (100 kW fast charging station) charger\* for minimal downtime.



### Electric technology display

The standard 7.0" touch-screen display provides real-time status of the battery charge, available driving range and the energy flow between the drivetrain components. When equipped with the available navigation system, you can also map out your range and find charging stations.



### Battery Temperature Management System

Beneficial for Canadian winters, the Battery Temperature Management System helps ensure battery performance does not suffer at low temperatures. It will pre-warm the battery while the vehicle is connected to the charger to help maximize performance and minimize cold temperature range loss.



### Battery charging times

Charging speed	Level 1 (1.4 kW)	Level 2 (7.2 kW)	Level 3 (50 kW)	Level 3 (100 kW)
Type	Standard household outlet (120 V)	Available household outlet/public	Public outlet	Public outlet
Charging time	48 hours	9 hours, 35 minutes	75 minutes	54 minutes
Capacity	100%	100%	80%	80%

Level 2 and level 3 charging cables not included. All charging times are approximate.





Ultimate model shown.  
May not be exactly as shown.

# Don't compromise on space, thanks to our innovative battery.

The Kona Electric offers plenty of space with the flexibility to take passengers and gear on your next exploration — in or out of town. Thanks to the innovative shape of the battery, it is placed below the cabin and cargo floor so that you can still enjoy maximum cargo versatility. Packed with comfort and convenience features, enjoy every moment of your drive with the Kona Electric.



Standard heated front seats



Standard heated steering wheel with mounted paddles



Button-type gear selector



Available ventilated front seats

# Advanced technology at your fingertips.

In addition to the advanced electric powertrain technology powering the Kona Electric, there is also a wealth of convenience features to help you stay connected and navigate around the city with ease.



## Head-Up Display

The available 8.0" Head-Up Display helps you stay safe by projecting important information like speed, navigation commands and safety warnings within your line of sight — so you can keep your eyes on the road.



## 7.0" or 8.0" touch-screen display with Apple CarPlay™ and Android Auto™

Standard Apple CarPlay™ and Android Auto™ let you interact with your favourite apps, access navigation, use voice commands for text messages or stream your favourite songs through the available Infinity® sound system. An available 8.0" touch-screen provides added convenience with a built-in navigation system.



Available rain-sensing wipers



Standard proximity keyless entry with push-button start



Available Infinity® audio system with 8 speakers



#### Wireless charging pad\*

Located in the centre console, an available wireless charging pad lets you easily charge a compatible smartphone without the use of messy and unsightly cables.



Features include:

- ✓ Remote start the cabin climate control
- ✓ Remote lock/unlock
- ✓ Find my car
- ✓ Automatic collision notification and roadside assistance
- ✓ Vehicle and EV status
- ✓ Remote charge management
- ✓ Complimentary 5-year subscription on equipped models

#### BlueLink<sup>®</sup>

Enjoy a complimentary 5-year subscription of our BlueLink<sup>®</sup> connected car system. Once set up, it conveniently enables you to locate your vehicle, remotely start the cabin climate control for advanced warming or cooling, unlock or lock the doors and, in the event of an accident, can automatically call emergency services. Please see your dealer for full service-level details.

# Learn more about Hyundai SmartSense™ safety technologies.

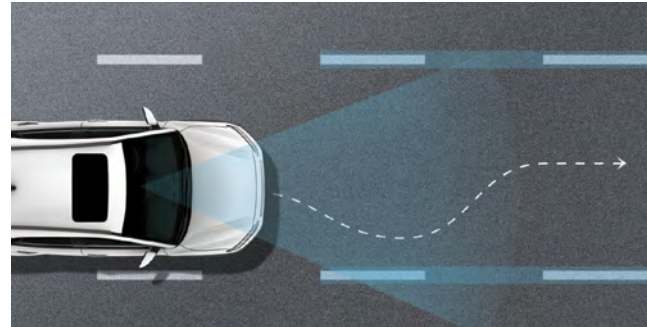
The 2019 Kona Electric features a suite of available Hyundai SmartSense™ safety technologies.

Advanced driver assistance systems developed to help alert you to, and even avoid, unexpected dangers on the road.



## Forward Collision-Avoidance Assist with Pedestrian Detection<sup>1</sup>

The standard Forward Collision-Avoidance Assist system uses the front-mounted camera and the radar sensor to monitor the traffic ahead. Should it detect a potential collision with a vehicle or pedestrian in your path, it will warn the driver and, if required, automatically slow or stop the vehicle.



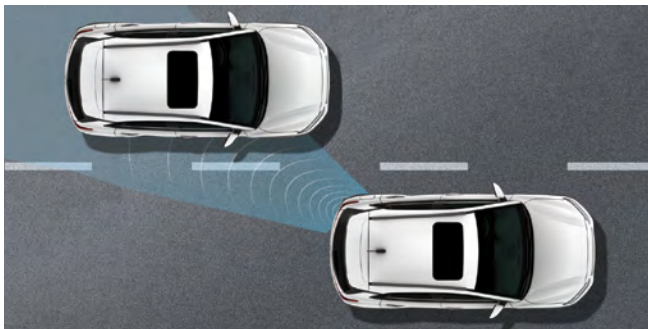
## Lane Departure Warning with Lane Keeping Assist<sup>2</sup>

Drift outside your lane without signaling and this standard system will alert you with audible and visual cues. If no action is taken, Lane Keeping Assist can apply corrective steering assistance to remain within the lane.



## Driver Attention Warning<sup>3</sup>

When a pattern of fatigue or distraction is identified, this standard feature gets the driver's attention with an audible alert and pop-up message suggesting a break from driving.



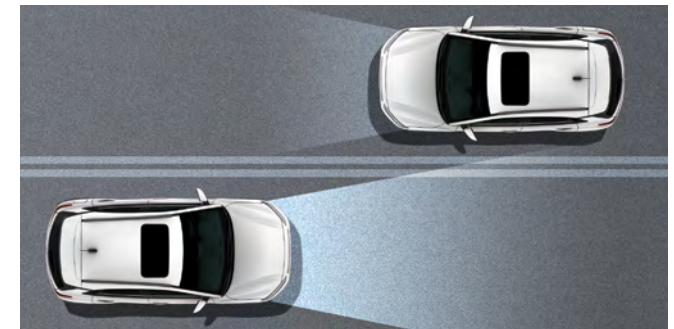
## Blind-Spot Collision Warning with Lane Change Assist<sup>4</sup>

The standard Blind-Spot Collision Warning system lets you know if a vehicle is in your blind spot. Plus, our innovative system also senses the speed of the vehicle in the adjacent lane. If it's approaching faster than you can safely make the lane change, it will signal an alarm.



## Rear Cross-Traffic Collision Warning<sup>5</sup>

Activated during reverse driving, the standard Rear Cross-Traffic Collision Warning uses radar to warn the driver of vehicles approaching from either side, even before they come into view of the standard rearview camera.



## High Beam Assist

High Beam Assist provides an extra level of confidence. A front camera continuously monitors traffic and lighting conditions to automatically turn high beams on or off.



#### **Parking Distance Warning – Reverse**

With this standard feature, sensors in the rear bumper detect and warn the driver about imminent obstacles for safe parking. Audible alerts will increase in frequency as you approach closer to objects behind you.



#### **Parking Distance Warning – Front**

Enjoy even more peace of mind with front parking sensors. They will help alert you to objects in front of the vehicle and reduce the stress of parking in tight spaces or manoeuvring around objects.

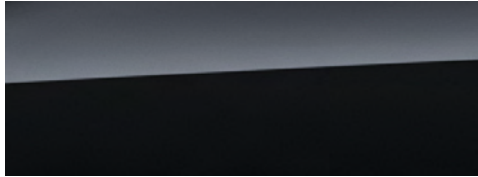
## The SUPERSTRUCTURE™

The Kona Electric features an ultra-rigid vehicle chassis at its core, which we call the SUPERSTRUCTURE™. Built with our very own Advanced High-Strength Steel, it is designed to be stronger, stiffer and lighter than conventional steel, to provide greater benefits in safety, ride comfort and energy efficiency. In the event of a collision, the SUPERSTRUCTURE™ helps protect occupants inside the cabin by absorbing harmful energy and redirecting it away from the passenger compartment.



# Colours and wheels

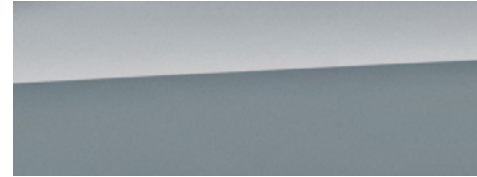
## Exterior colours\*



Phantom Black



Chalk White



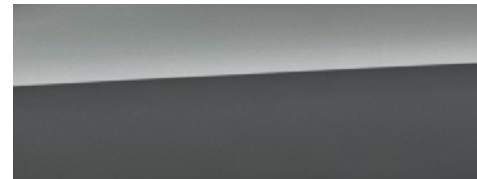
Lake Silver



Pulse Red



Ceramic Blue



Galactic Grey

## Roof colours\*

The Preferred model features available two-tone body colour. Choose between the following roof colours to customize your Kona Electric:

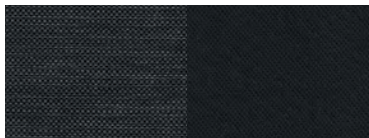


White  
Pair with Ceramic Blue

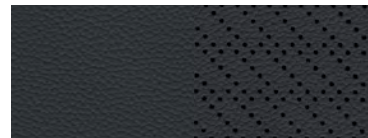


Black  
Pair with Chalk White and Pulse Red

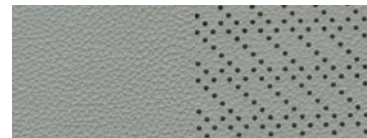
## Interior colours\*



Black interior with black cloth  
Standard on Preferred model



Black interior with black leather  
Standard on Ultimate model



Pebble blue interior with grey leather  
Available on Ultimate model  
(with Chalk White, Ceramic Blue  
and Galactic Grey exterior colours only)

## Wheels



17" alloy wheel  
Standard on Preferred and Ultimate models

\*Exterior and interior colour options and/or availability by model may change without notice. Choice of interior colour is dependent on model and/or exterior colour selection. Colours shown are for reference only and may vary from the actual hue. Visit [hyundaicanada.com](http://hyundaicanada.com) or see your dealer for details.

# Dimensions

Overall width  
(excluding side mirrors)



1,800 mm

Overall length



4,180 mm

Overall height  
(with roof rack)



1,570 mm

# Accessories



## Cargo Tray

Add years to the interior of your Hyundai by protecting it from spills and messy loads with a durable, custom-fit cargo tray.



## Entry Guard

Make first impressions count. Welcome passengers to your cabin with these stainless steel entry guards featuring the Kona logo. Set of four.



## Cross Rails

This durable, quick-locking cross rail system lets you transport cargo easily, without sacrificing interior room.



## Premium All-Weather Floor Liners

Premium all-weather floor liners were designed to cover the interior carpet, providing maximum protection against the elements that other mats cannot offer. Their unique and durable design features a non-slip surface for added comfort and a long-lasting premium look. Remove carpet mats prior to installation.

For more information on additional accessories please visit [hyundaicanada.com](http://hyundaicanada.com), or see your dealer for details. Vehicle and accessories may not be exactly as shown.



# Model summary

## Preferred

Standard equipment includes:

- 150 kW electric motor + 64.0 kWh Lithium-ion polymer battery
- Battery Temperature Management System
- Button-type gear selector
- Drive Mode Select (Eco, Eco+, Normal, Sport)
- Electric fast charger (100 kW charging capacity)
- Electronic Parking Brake with Automatic Vehicle Hold
- Heat pump system
- Multi-link rear suspension
- Steering wheel-mounted paddles for regenerative braking intensity
- Automatic headlights
- Front solar control glass
- Integrated rear spoiler
- LED daytime running lights
- Power, heated side mirrors with turn signal indicators
- Rear privacy glass
- Roof rack side rails
- Unique 17" alloy wheels
- Unique LED tail lights with graphics
- 4-wheel disc brakes
- 6 airbags
- Adaptive Cruise Control with traffic stop and go
- Blind-Spot Collision Warning
- Driver Attention Warning
- Forward Collision-Avoidance Assist with Pedestrian Detection
- Hill-start Assist Control
- Lane Departure Warning with Lane Keeping Assist
- Parking Distance Warning — Reverse
- Rear Cross-Traffic Collision Warning
- Remote keyless entry system with alarm
- Tire Mobility Kit
- Vehicle Stability Management, Electronic Stability Control, Traction Control System, Anti-lock Braking System
- 6-way manually adjustable front seats
- 7.0" colour touch-screen display
- 7.0" TFT LCD instrument cluster with Electric Technology Display
- 60/40 split-fold down rear seatbacks
- Aluminum pedals
- Automatic temperature control with auto-defogging system
- Apple CarPlay™ and Android Auto™
- BlueLink® Connected Car System
- Bluetooth® hands-free phone system with voice recognition
- Centre console with storage compartment and armrest
- Cloth seating surfaces
- Heated front seats
- Heated steering wheel
- Leather-wrapped steering wheel
- Map lights with sunglasses holder
- Power windows with driver's auto-up/down with pinch protection
- Proximity keyless entry with push-button start
- Rear centre armrest with cup holders
- Rearview camera
- SiriusXM™ satellite radio
- Sunvisors, illuminated vanity mirrors with extensions
- Tilt-and-telescopic steering wheel
- Under tray cargo storage
- USB/MP3 auxiliary input jacks
- High-power USB charging outlet
- PTC heater

### Optional:

- Two-tone exterior body colour (available with select exterior colours only)

## Ultimate

Includes **Preferred** standard equipment plus:

- LED headlights with active cornering system
- Power sunroof
- Rain-sensing windshield wipers
- High Beam Assist
- 8.0" colour touch-screen with Electric Technology Display
- Auto-dimming rearview mirror with HomeLink® and compass
- Head-Up Display
- Infinity® premium audio system with 8 speakers (including Clari-Fi™ music restoration technology)
- LED interior illumination (map lights, room lamps, cargo lamp)
- Leather seating surfaces
- Navigation system (includes Map Care: two updates per year for five years, free of charge — see dealer for details)
- Front passenger auto-up/down window
- Power driver's seat with lumbar support
- Wireless charging pad\*
- Ventilated front seats
- Parking Distance Warning — Front and Reverse

# Specifications

	Preferred	Ultimate
<b>Performance</b>		
<b>Electric motor type</b>		
150 kW (201 hp) Interior permanent magnet synchronous electric motor	•	•
<b>Transmission</b>		
Single-speed reduction gear	•	•
<b>Battery type</b>		
64.0 kWh Lithium-ion polymer	•	•
<b>Drive configuration</b>		
Front-Wheel Drive (FWD)	•	•
<b>Other</b>		
Battery Temperature Management System	•	•
Button-type gear selector	•	•
Drive Mode Select	•	•
SAE Combo-type quick charge port (Level 3)*	•	•
<b>Exterior</b>		
<b>Wheels and tires</b>		
17 x 7.0J alloy wheels	•	•
P215/55R17 all-season low rolling resistance tires	•	•
Tire Mobility Kit	•	•
Tire pressure monitoring system	•	•
<b>Exterior lighting</b>		
Automatic headlights	•	•
LED daytime running lights	•	•
LED tail lights	•	•
Projector headlights	•	•
LED headlights (low/high beam) with active cornering lights	-	•
<b>Outside mirrors</b>		
Mirror-mounted turn signal indicators	•	•
Power-adjustable, body colour, heated with timer	•	•
<b>Mouldings and trim</b>		
Active grille shutters	•	•
Body colour door handles	•	•
Body colour grille with cross-hatch, debossed design	•	•
Premium dark grey body cladding	•	•
Sharkfin antenna	•	•
Two-tone body colour	◦	-
<b>Glass</b>		
Rear window privacy glass	•	•
Solar front glass	•	•
Power sunroof	-	•
<b>Wipers</b>		
Intermittent rear window wiper/washer (non-variable)	•	•
Washer fluid sensor	•	•
Rain-sensing windshield wipers	-	•
<b>Interior</b>		
<b>Seating</b>		
5-passenger capacity	•	•
60/40 split-fold down rear seats with adjustable head restraint	•	•
Dual level cargo floor	•	•
Heated front seats (3 stages)	•	•
Under-floor storage tray in cargo area	•	•
6-way manually adjustable driver's seat	•	-
Cloth seats	•	-
8-way power-adjustable driver's seat with 2-way lumbar support	-	•
Leather seating surfaces	-	•
Ventilated front seats	-	•

• Standard - Not Available ◦ Optional

	Preferred	Ultimate
<b>Multimedia</b>		
Android Auto™ and Apple CarPlay™	•	•
BlueLink® Connected Car System	•	•
Bluetooth® hands-free phone system with voice recognition	•	•
Rearview camera	•	•
USB and MP3 auxiliary input jacks (centre console-mounted)	•	•
7.0" touch-screen display	•	-
AM/FM/SiriusXM™/MP3 audio system with 6 speakers	•	-
8.0" colour touch-screen display with navigation system and Electric Technology Display	-	•
AM/FM/SiriusXM™/HD Radio/MP3 Infinity® premium audio system with 8 speakers	-	•
Head-Up Display	-	•
Wireless charging pad*	-	•
<b>Interior trim</b>		
Aluminum pedals	•	•
<b>HVAC</b>		
Automatic temperature control with automatic window defogging system	•	•
External temperature display	•	•
Heat pump system	•	•
Rear window defroster with timer	•	•
<b>Steering wheel and instrumentation</b>		
7.0" TFT LCD "Supervision" instrument panel display with multi-function trip computer	•	•
Steering wheel-mounted audio, cruise and Bluetooth® controls	•	•
Heated, leather-wrapped steering wheel	•	•
Manual tilt-and-telescopic steering wheel	•	•
Steering wheel-mounted paddles for regenerative braking intensity	•	•
<b>Convenience</b>		
12 V outlet — front centre console (1)	•	•
Adaptive Cruise Control with traffic stop and go	•	•
Electronic Parking Brake with Auto Vehicle Hold	•	•
Power door locks and power windows with driver's auto-up/down with pinch protection	•	•
Proximity keyless entry with push-button start	•	•
Remote keyless entry system with alarm and panic	•	•
USB charging outlet — front centre console (1)	•	•
Electrochromic auto-dimming rearview mirror with HomeLink® integrated transceiver	-	•
Front passenger's auto-up/down window with pinch protection	-	•
<b>Safety</b>		
6 airbags	•	•
Anti-lock Braking System with Brake Assist and Electronic Brake-force Distribution	•	•
Blind-Spot Collision Warning with Lane Change Assist	•	•
Driver Attention Warning	•	•
Electronic Stability Control with Traction Control System	•	•
Forward Collision-Avoidance Assist with Pedestrian Detection	•	•
Hill-start Assist Control	•	•
Lane Departure Warning with Lane Keeping Assist	•	•
Parking Distance Warning — Reverse	•	•
Rear Cross-Traffic Collision Warning	•	•
Vehicle Stability Management	•	•
High Beam Assist	-	•
Parking Distance Warning — Front and Reverse	-	•



## One of the best-backed warranties in Canada.

You will see that a number of our vehicles have received multiple awards from the most reputable third-party organizations, so you can take their word when it comes to the quality of our vehicles. This quality is equally matched by the quality of our warranty. We stand confidently behind our products to give you ultimate peace of mind with a 5-year/100,000 kilometre Comprehensive Limited Warranty<sup>†</sup>. We also provide a 5-year/Unlimited kilometre Roadside Assistance Program<sup>\*\*</sup> featuring flat tire changing, lockout service and more. Just one toll-free call away, 24 hours a day.

<sup>™</sup>The Hyundai name, logos, product names, feature names, images and slogans are trademarks owned or licensed by Hyundai Auto Canada Corp.. Specifications, features, illustrations, accessories, materials and equipment and all other information shown in this brochure are based on the latest information available at the time of publication. Although descriptions are believed to be correct, accuracy cannot be guaranteed. Hyundai Auto Canada Corp. reserves the right to make any changes or modifications at any time, without notice or obligation, including, without limitation, in colour, specifications, features, accessories, materials, equipment and models. Some vehicles are shown with optional equipment. All Hyundai warranties have no deductible. <sup>†</sup>Hyundai's Comprehensive Limited Warranty coverage covers most vehicle components against defects in workmanship under normal use and maintenance conditions. <sup>\*\*</sup>Hyundai's 24-Hour Roadside Assistance Program is a limited service and does not cover certain costs or expenses. Roadside Assistance is not a warranty. <sup>\*\*\*</sup>EV System includes motor, inverter unit, VCM, reduction gear, DC/DC converter, onboard charger and connector, trickle charge cable, in-cable control box and high voltage battery. <sup>\*</sup>Calculated based on a fully charged battery. Based on manufacturer testing and used for comparison purposes only. Actual range may vary based on driving conditions and the addition of certain vehicle accessories. <sup>4</sup>Apple CarPlay™ works with iPhone 5s, iPhone 5c, iPhone 5 and later models running the latest version of iOS 7 and above. Apple CarPlay™ may not be available on all devices and may not be available in all countries or regions. Visit [www.apple.com](http://www.apple.com) for further details and any applicable limitations. Subject to app compatibility. Apple and Apple CarPlay are trademarks of Apple Inc.. <sup>5</sup>Android Auto™ is compatible with Android phones running Android Lollipop or newer. Android Auto may not be available on all devices and is not available in all countries or regions. Additional apps may be required. Visit [www.android.com](http://www.android.com) for further details and any applicable limitations. Subject to app compatibility. Android and Android Auto are trademarks of Google Inc.. <sup>††</sup>Not all devices will be compatible. See Owner's Manual for further details. <sup>6</sup>BlueLink® includes 5 years of service without charge. The BlueLink® service is available for new vehicle purchases and leases subject to the BlueLink® subscription terms and conditions. Only use BlueLink® and corresponding devices when safe to do so. Cellular and GPS coverage is required. Features, specifications and fees may vary by models and are subject to change. For more on details and limitations, visit [hyundaicanada.com](http://hyundaicanada.com) or your authorized Hyundai dealer. <sup>7</sup>Forward Collision-Avoidance Assist (FCA) is designed to detect vehicles that are directly in front of the vehicle. FCA will not detect all vehicles and objects. FCA may not work on winding or hilly roads, during certain weather conditions such as rain, snow, fog and any other times of limited visibility. FCA initiates full braking at speeds between 8 and 80 km/h (vehicle detection) or 8 and 64 km/h (pedestrian detection). See Owner's Manual for detailed descriptions of example conditions in which FCA may not detect a pedestrian. FCA is not a substitute for safe driving. Always check your surroundings when driving. See Owner's Manual for further details and limitations. <sup>8</sup>The Lane Departure Warning with Lane Keeping Assist operates when vehicle speed exceeds 60 km/h and only when the lane markings are clearly visible on the road and detected by the system. It will not prevent loss of control. See Owner's Manual for further details and limitations. <sup>9</sup>Driver Attention Warning (DAW) is only a notification system and will not influence the direction or speed of the vehicle. DAW will not prevent accidents. DAW does not replace attentive and safe driving. Always ensure that you pay careful attention while driving. See Owner's Manual for further details and limitations. <sup>10</sup>Never rely completely on Blind-Spot Collision Warning (BCW) and be sure to use proper lane changing procedures. BCW engages at 30 km/h. BCW will not detect every object or vehicle and will not prevent accidents. Always look over your shoulder and use your mirrors to confirm clearance. See Owner's Manual for further details and limitations. <sup>11</sup>Never rely exclusively on the Rear Cross-Traffic Collision Warning. Always look over your shoulder and use your mirrors to confirm rear clearance. There are limitations to the function, detection, range and clarity of the system. The system may not detect every vehicle. This system does not detect stationary objects. Vehicle must be in reverse and has to be travelling at 10 km/h or less. See Owner's Manual for further details and limitations. <sup>12</sup>Level 2 and level 3 charging cables not included. All charging times are approximate. The SiriusXM™ name is a trademark of SiriusXM Satellite Radio Inc.. Bluetooth® word mark and logos are registered trademarks owned by Bluetooth SIG, Inc.. HomeLink® is a registered trademark of Johnson Controls Inc.. Infinity® is a registered trademark of Harman International, Inc.. All other trademarks and trade names are those of their respective owners.



**Customer Care**  
[hyundaicanada.com/customer-care](http://hyundaicanada.com/customer-care)

**Hyundai Auto Canada Corp.**  
[hyundaicanada.com](http://hyundaicanada.com)

