

KONA electric

2021



A bit about us.

With Hyundai, you can really have it all.

Our company believes in pushing the boundaries and challenging conventional thinking. Our very name, “Hyundai”, stands for modernity in the Korean language and it is this one word that helps represent everything we stand for. We don’t approach vehicle development in a traditional way. Our company is structured differently. We think differently. We find the modern way. It’s our mission to offer top quality, feature-rich vehicles at an affordable price.

We offer elite quality through meticulous design and painstaking craftsmanship. Our three design centres in Korea, the U.S. and Europe compete against each other to bring you cutting-edge designs — designs that not only look stunning but are also aerodynamic and fuel efficient.

We are the only global automaker to manufacture our own Advanced High-Strength Steel because, simply put, we just weren’t satisfied with what was available.

We test our vehicles in areas like the Arctic, our proving grounds in the Mojave Desert and on Germany’s world-famous Nürburgring circuit to deliver the durability and reliability you demand. And not only do we package our vehicles with advanced safety and technology, we back all our vehicles with one of the best automotive warranties in the industry. This means you really can have it all, quality and value together.



Kona electric SUPERSTRUCTURE™ shown,
made with our Advanced High-Strength Steel.

Power, fun and efficiency.

Enjoy electric driving at its best with fantastic acceleration and plenty of range. The versatile and fun-to-drive Kona electric combines bold SUV style and features with a very impressive electric driving range. You can travel up to 415 kilometres* on a single charge, completely emissions-free. With this extensive range, you could charge the battery as little as once a week, depending on your lifestyle and driving habits. Charge at home, at work or on the road at a public charging station.



Go electric. In style.

Why follow the crowd when you can blaze your own trail with the Kona electric?

Without the need for extensive powertrain cooling, the unique closed-off front grille gives a clean and stylish appearance. Functional air curtains around the front bumper help to reduce turbulence around the front wheels, enhancing aerodynamics. Bold body cladding runs along the side profile for a sporty look — and you can opt for available two-tone colour options to customize the Kona electric to your style preferences.



Standard 17" alloy wheels



Available LED headlights with active cornering lights
Available LED tail lights

Don't compromise on space, thanks to our innovative battery.

The Kona electric offers plenty of space with the flexibility to take passengers and gear on your journeys – in or out of town. Thanks to the innovative shape of the battery, it's situated below the cabin and cargo floor, allowing maximum cargo versatility.

Packed with comfort and convenience, enjoy every moment of your drive with the available heated front seats and steering wheel to warm you up all winter long, and available ventilated front seats to cool you down when the weather gets hot.



Ultimate model shown.
May not be exactly as shown.



Available heated steering wheel
Available power sunroof



Available heated front seats
Available ventilated front seats
Standard 60/40 split-fold rear seats

Electrifying innovation.

In addition to the advanced electric powertrain technology powering the Kona electric, there is also a wealth of convenience features to help you stay connected and navigate around the city with ease. Starting with the 7.0" or available 10.25" touch-screen, both give you intuitive access to many of your favourite apps, thanks to standard Apple CarPlay™ and Android Auto™. Access your playlist and turn up the volume to enjoy the premium sound quality of the available Infinity® audio system — and when your smartphone is almost out of battery, simply make use of the available wireless charging pad▼.

Finally, to help lessen distractions, the available Head-Up Display supports safe driving by projecting your speed, safety warnings and much more within your line of vision, so you can keep your eyes on the road ahead.



Electric charging port



Available 10.25" touch-screen with navigation system
Available wireless charging pad*



Available 8.0" Head-Up Display
Available Infinity® premium audio system



Hyundai SmartSense™

Our suite of available Hyundai SmartSense™ safety features includes a range of camera, radar and motion detection technologies to provide you with added peace of mind.

Available technologies include Blind-Spot Collision Warning¹ to help notify the driver of an unsafe lane change, and Adaptive Cruise Control with traffic stop and go² to automatically adjust your vehicle speed to maintain a set distance from the vehicle ahead.

Standard features:



Forward Collision-Avoidance Assist (available with Pedestrian Detection)



Lane Departure Warning with Lane Keeping Assist

Available features:



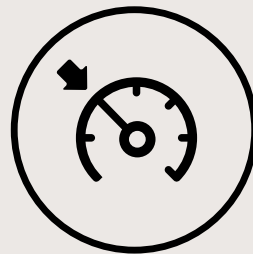
Blind-Spot Collision Warning with Lane Change Assist



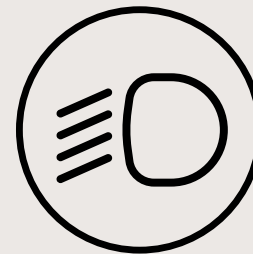
Rear Cross-Traffic Collision Warning



Parking Distance Warning – Front and Reverse



Adaptive Cruise Control with traffic stop and go



High Beam Assist

Ultimate convenience. Ultimate connectivity.

Bluelink[®] is our connected vehicle system that is available throughout our vehicle lineup. The advanced system conveniently keeps you connected with your Hyundai via the smartphone app, and offers a suite of services at the press of a button. Visit hyundaicanada.com/bluelink or see your dealer for more information on the complete list of innovative features that Bluelink[®] puts at your fingertips.



Remote start with climate control



SOS emergency and roadside assistance



Automatic collision notification



Remote lock/unlock



Find my car



Local search



Real-time diagnostics



Find a dealer



Complimentary 3-year subscription on equipped models



Find the KONA electric that is right for you.

Essential

Standard equipment includes:

Performance features:

- 150 kW electric motor + 64 kWh lithium polymer high-voltage battery (201 horsepower, 290 lb-ft torque)
- 415 km all-electric range
- 4-wheel disc brakes
- Battery Temperature Management System
- Drive Mode Select
- Multilink rear suspension
- Regenerative braking system with steering-wheel mounted paddles
- SAE combo-type quick charge port (Level 3)
- Shift-by-wire gear selector

Exterior features:

- 17" aluminum alloy wheels with all-season low-rolling resistance tires
- Automatic headlights
- Body-coloured exterior mirrors and door handles
- Electric, heated side mirrors with turn signal indicators
- LED daytime running lights
- Integrated rear spoiler
- Projection headlights

Interior features:

- 6-way manually adjustable driver's seat
- 7.0" LCD instrument cluster with EV technology display
- 60/40 split-fold flat rear seats with adjustable head restraint
- AM/FM/SiriusXM™/MP3 audio system with 6 speakers and 7.0" touch-screen display
- Android Auto™ and Apple CarPlay™
- Automatic temperature control with auto-defogging windshield system
- Bluelink® connected vehicle system²
- Bluetooth® hands-free phone system with voice recognition
- Power door locks and power windows with driver's auto-up/down and pinch protection
- Proximity keyless entry with push-button ignition
- Steering wheel-mounted audio, cruise and phone controls
- Tilt-and-telescopic steering wheel
- USB/AUX input jacks

Safety features:

- 6 airbags
- Anti-lock Braking System with Electronic Brake-force Distribution
- Cruise control
- Electronic Parking Brake with Auto Vehicle Hold
- Forward Collision-Avoidance Assist (camera type)
- Hill-start Assist Control
- Lane Departure Warning with Lane Keeping Assist
- Rearview camera
- Tire Mobility Kit
- Tire Pressure Monitoring System
- Vehicle Stability Management with Electronic Stability Control and Traction Control System

Preferred

Includes **Essential** standard equipment plus:

Performance features:

- Battery heating system
- Heat pump system

Exterior features:

- Rear privacy glass
- Roof rails
- Solar front glass
- Unique LED tail lights with graphics

Interior features:

- Cargo net
- Heated front seats
- Heated steering wheel
- Infinity® premium audio system with Clari-Fi™ music restoration technology and 8 speakers
- Leather-wrapped steering wheel

Safety features:

- Adaptive Cruise Control with traffic stop and go
- Blind-Spot Collision Warning with Lane Change Assist
- Driver Attention Warning
- Forward Collision-Avoidance Assist with Pedestrian Detection (camera and radar type)
- Parking Distance Warning – Reverse
- Rear Cross-Traffic Collision Warning

Optional:

- Unique two-tone roof

Ultimate

Includes **Preferred** standard equipment plus:

Exterior features:

- LED headlights (bi-functional) with active cornering lights
- Power tilt-and-slide sunroof
- Rain-sensing windshield wipers

Interior features:

- 8.0" Head-Up Display
- 8-way power adjustable driver's seat including 2-way power lumbar support
- 10.25" colour touch-screen with navigation system
- Auto-dimming rearview mirror with HomeLink® and compass
- Front passenger's auto-up/down window with pinch protection
- Leather seating surfaces
- LED interior illumination (map lights, room lights, cargo light)
- Ventilated front seats
- Wireless charging pad³

Safety features:

- High Beam Assist
- Parking Distance Warning – Front and Reverse

Features that make electric driving a breeze.

Heat pump system

The available heat pump system helps reduce the loss of electric driving range in cold winter weather. The system absorbs external heat energy and converts it to cabin heating, therefore requiring less energy usage by the HVAC system.

Convenient charging

A port located in the front grille makes charging quick and easy, whether you are at home, work or on the go. The battery can be recharged to up to 80% of its capacity in less than an hour with a level 3 (100 kW fast charging station) charger* for minimal downtime.

Electric technology display

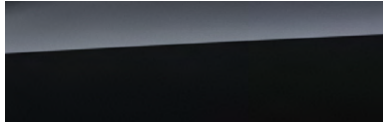
See a real-time status of the battery charge, available driving range and the energy flow between the drivetrain components via the touch-screen display. When equipped with the available navigation system, you can also map out your range and find charging stations.

Battery Temperature Management System

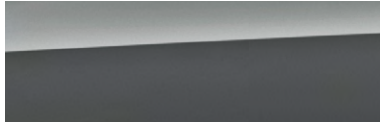
Beneficial for Canadian winters, this standard feature helps ensure battery performance does not suffer at low temperatures. It will pre-warm the battery while the vehicle is connected to the charger to help maximize performance and minimize cold temperature range loss.

Colours and wheels.

Exterior colours*



Phantom Black



Galactic Grey

Available on Preferred and Ultimate models only



Lake Silver[‡]

Available on Preferred and Ultimate models only



Chalk White

Available on Preferred and Ultimate models only



Pulse Red

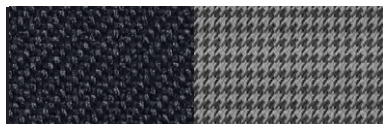
Available on Preferred and Ultimate models only



Ceramic Blue[‡]

Available on Preferred and Ultimate models only

Interior colours*



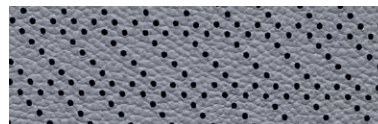
Black interior with black cloth

Standard on Essential and Preferred models



Black interior with black leather

Standard on Ultimate model



Pebble Blue interior with grey leather

Available on Ultimate model
(with Chalk White, Ceramic Blue[‡] and Galactic Grey exterior colours only)

Two-tone exterior colours*

The Preferred model features contrasting roof colours for added style. Choose between the following to customize your Kona electric:



Chalk White roof

Standard with Ceramic Blue[‡]



Phantom Black roof

Standard with Pulse Red



Phantom Black roof

Optional with Chalk White

Wheel



17" alloy wheel

Accessories.



Premium all-weather cargo tray

Protect your interior cargo area with style. This durable, custom-fit premium cargo tray protects from spills and messy loads while helping keep your cargo area looking new for years to come.



Premium all-weather floor liners

Premium all-weather floor liners were designed to cover the interior carpet providing maximum protection against the elements that other mats cannot offer. Their unique and durable design features a non-slip surface for added comfort and a long-lasting premium look. Remove carpet mats prior to installation.



Cross rails and ski/snowboard carrier

This durable, quick-locking cross rails system lets you transport cargo easily, without sacrificing interior room. Carry up to six pairs of skis or two snowboards with this convenient lockable carrier.



Entry guard

Make first impressions count. Welcome passengers to your cabin with these stainless steel entry guards featuring the Kona logo. Set of four.

5 YEAR	100,000 km Comprehensive Limited Warranty [†]
5 YEAR	100,000 km Powertrain Warranty
5 YEAR	100,000 km Emission Warranty
5 YEAR	Unlimited km Roadside Assistance Program ^{††}
8 YEAR	160,000 km Electric Vehicle System ^{†††}

One of the best-backed warranties in Canada.

You will see that a number of our vehicles have received multiple awards from the most reputable third-party organizations, so you can take their word when it comes to the quality of our vehicles. This quality is equally matched by the quality of our warranty. We stand confidently behind our products to give you ultimate peace of mind with a 5-year/100,000 kilometre Comprehensive Limited Warranty[†]. We also provide a 5-year/Unlimited kilometre Roadside Assistance Program^{††} featuring flat tire changing, lockout service and more. Just one toll-free call away, 24 hours a day.

^{™/®}The Hyundai name, logos, product names, feature names, images and slogans are trademarks owned or licensed by Hyundai Auto Canada Corp.. Specifications, features, illustrations, accessories, materials and equipment and all other information shown in this brochure are based on the latest information available at the time of publication. Although descriptions are believed to be correct, accuracy cannot be guaranteed. Hyundai Auto Canada Corp. reserves the right to make any changes or modifications at any time, without notice or obligation, including, without limitation, in colour, specifications, features, accessories, materials, equipment and models. Some vehicles are shown with optional equipment. All Hyundai warranties have no deductible. [†]Hyundai's Comprehensive Limited Warranty coverage covers most vehicle components against defects in workmanship under normal use and maintenance conditions. ^{††}Hyundai's 24-Hour Roadside Assistance Program is a limited service and does not cover certain costs or expenses. Roadside Assistance is not a warranty. ^{†††}EV System includes motor, inverter unit, VCM, reduction gear, DC/DC converter, onboard charger and connector, trickle charge cable, in-cable control box and high-voltage battery. [^]All-electric driving range of 415 kilometres based on a battery capacity of 64.0 kWh and battery usage rate of 17.4 kWh/100 km. Calculated based on a fully charged battery. Based on manufacturer testing and used for comparison purposes only. Actual range may vary based on driving conditions and the addition of certain vehicle accessories. ^{*}Not all devices will be compatible. See Owner's Manual for further details. [^]Apple CarPlay™ works with iPhone 5s, iPhone 5c, iPhone 5 and later models running the latest version of iOS 7 and above. Apple CarPlay may not be available on all devices and may not be available in all countries or regions. Visit www.apple.com for further details and any applicable limitations. Subject to app compatibility. Apple and Apple CarPlay are trademarks of Apple Inc.. [^]Android Auto™ is compatible with Android phones running Android Lollipop or newer. Android Auto may not be available on all devices and may not be available in all countries or regions. Additional apps may be required. Visit www.android.com for further details and any applicable limitations. Subject to app compatibility. Android and Android Auto are trademarks of Google Inc.. [^]Vehicle is equipped with the ability to access SiriusXM radio. Does not include subscription. The SiriusXM™ name is a trademark of SiriusXM Satellite Radio Inc.. [^]Bluelink® includes 3 years of service without charge. The Bluelink service is available for new vehicle purchases and leases subject to the Bluelink subscription terms and conditions. Only use Bluelink and corresponding devices when safe to do so. Cellular and GPS coverage is required. Features, specifications, and fees may vary by model and are subject to change. For more on details and limitations, visit hyundaicanada.com or your authorized Hyundai dealer. [†]Never rely completely on Blind-Spot Collision Warning (BCW) and be sure to use proper lane changing procedures. BCW engages at 30 km/h. BCW will not detect every object or vehicle and will not prevent accidents. Always look over your shoulder and use your mirrors to confirm clearance. See Owner's Manual for further details and limitations. [^]Adaptive Cruise Control (ACC) with traffic stop and go capability is not a collision avoidance or warning device. ACC is for highway use only and should not be used in poor weather, heavy or varying traffic, or on winding or slippery roads. Driver remains responsible to slow or stop the vehicle to avoid a collision. Acceleration after the vehicle comes to a complete stop will only occur when the vehicle has been stopped for less than three seconds. See Owner's Manual for further details and limitations. Bluetooth® word mark and logos are registered trademarks owned by Bluetooth SIG, Inc.. HomeLink® is a registered trademark of Johnson Controls Inc.. All other trademarks and trade names are those of their respective owners. Infinity® is a registered trademark of Harman International, Inc.. ^{*}Level 2 and level 3 charging cables not included. All charging times are approximate. Some images shown with special graphic effects.

Hyundai Auto Canada Corp.
hyundaicanada.com

